



Your IT Asset Inventory Retrieval Service and Custom Report Leader



Enhanced Web Reporting – EWR

- Extend the asset information capabilities of Microsoft’s System Center Configuration Manager (SCCM).
- In less than one hour generate reports on your IT assets.

Drill through to secondary reports

EWR includes over 90 different SQL Server Reporting Services (SSRS) reports and classic ASP reports. Categories of reports include: software, hardware, and dashboards. You can request a new report even if it is not currently available in EWR.

“Those are Awesome!”

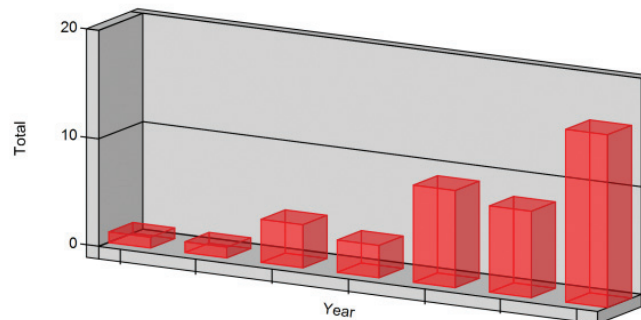
JIMMY MARTIN,
SCCM ADMIN

Enhanced Web Reporting
- EWR gathers data about
your IT asset inventory.

This data is then returned
to Microsoft’s System
Center Configuration
Manager (SCCM).

EWR reports are generated
from SCCM.

Count of PCs By Installed Year

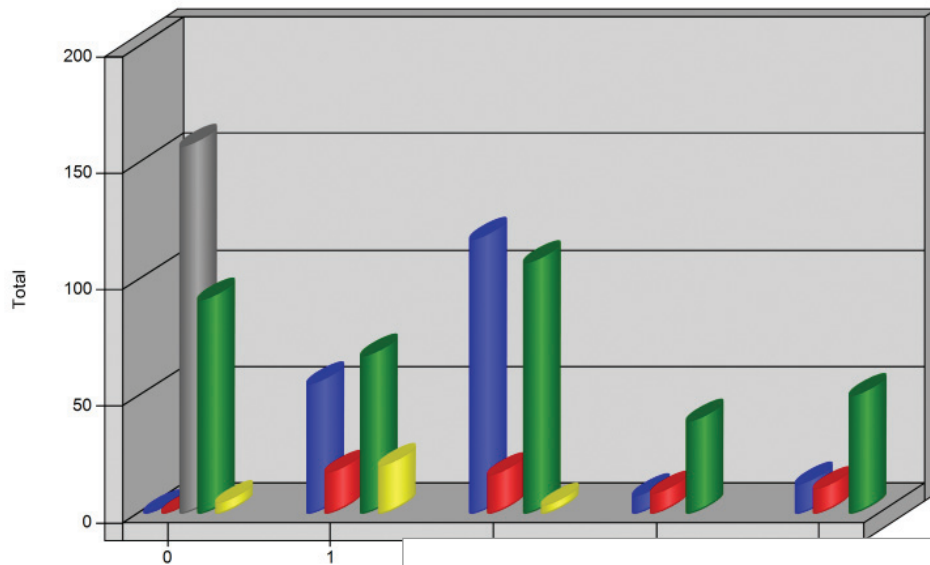


Year	Total
2005	1
2006	1
2007	4
2008	3
2009	9
2010	8
2011	16

Helps you keep track of your IT assets. You keep requesting reports to make it easier to track the lifecycle of IT assets, and we keep updating our EWR reports. You have access to all updates.

EWR Sample Reports:

Advertisement Metric Dashboard



Be more efficient.
Be more accurate.

Computer Windows Experience Index

PC Name GARTH-LT

The Windows Experience Index assesses key system components on a scale 1.0 to 7.9

Vista 1.0 to 5.9, Windows 7 1.0 to 7.9

Component	What is Rated	SubScore	Base Score
Processor:	Calculation per second	5.5	4.7
Memory (RAM):	Memory operation per second	5.9	
Graphics:	Desktop performance for Windows Aero	4.7	
Gaming Graphics:	3D Business and Gaming graphics performance	6.2	
Primary Hard disk:	Disk data transfer rate	5.6	

Message

Accepted - No Further Status

Failed

No Status

Succeeded

Waiting

Accepted - No Further Status

Failed

Succeeded

Waiting

Accepted - No Further Status

Failed

Succeeded

Waiting

	5/22/2011 12:00:00 AM	118
	5/22/2011 12:00:00 AM	17
	5/22/2011 12:00:00 AM	108
	5/22/2011 12:00:00 AM	4