

Monitor Information Reporting

V2.01
May 30, 2008



About.....	3
Using MIR	3
Evaluation version.....	3
Command Lines.....	3
Reporting	3
ConfigMgr / SMS wide Reports.....	4
Count of Monitor by Year.....	4
Count of Monitor by Year and Week	4
Count of Manufacturers	4
Count of Models.....	4
Count of Active Monitors.....	4
Count of Monitor Sizes	4
List of PCs by Model.....	4
List of PCs with x size monitors	4
Client Reports.....	4
List of Monitors by PC	5
Program Sample Output	5
Manual Install	5
sms_def.mof.....	5
Package / Program	6
Advertisement.....	7
Collections.....	8
Missing Monitor Data Collection.....	8
Considerations	9
On-going rollout.....	9
Purchasing policy.....	9
Table of Figures.....	9

About

In many businesses, informatics has been asked to track the life cycle of each asset on the network. With current tools available on the market there is no way to easily determine the asset information for Monitors.

Monitor Information Reporting (MIR) with Microsoft System Center Configuration Manager 2007 (ConfigMgr) , Microsoft System Management Server 2003 (SMS) or SMS 2.0 was created to fill that void.

Through a series of processes, MIR determines the information for each Monitor that it is executed on. This information is then returned to ConfigMgr / SMS so that ConfigMgr / SMS reports can be generated.

Using MIR

MIR requires .Net 2.0 to determine monitor information for each PC.

Run MIR on any PC or server to have it display the current monitor information for that PC / server.

Evaluation version

When using the Evaluation version of MIR, it will replace the monitor information that is normally returned to ConfigMgr / SMS with a note within the description field that an evaluation version of MIR was used.

Command Lines

Command lines are not case sensitive.

Switch	Function
/Auto	Runs silently

Reporting

MIR includes several reports to allow for reporting of the MIR data.

ConfigMgr / SMS wide Reports

Count of Monitor by Year

This report provides a count of the year monitors were manufactured. There is no drill through report.

Count of Monitor by Year and Week

This report provides a count of the year and week that monitors were manufactured. There is no drill through report.

Count of Manufacturers

This report provides a count of manufacturers. There is no drill through report.

Count of Models

This report provides a count of Models. This report drill through to “List of PCs by Model”

Count of Active Monitors

This report provides a count of Active Monitors. There is no drill through report.

Count of Monitor Sizes

This report provides a count of monitor by size. This report drill through to “List of PCs with x size monitors”

List of PCs by Model

This report provides a list of PCs with a particular model. This report drill through to “List of Monitors by PC”

List of PCs with x size monitors

This report provides a list of PCs with a particular monitor size. This report drill through to “List of Monitors by PC”

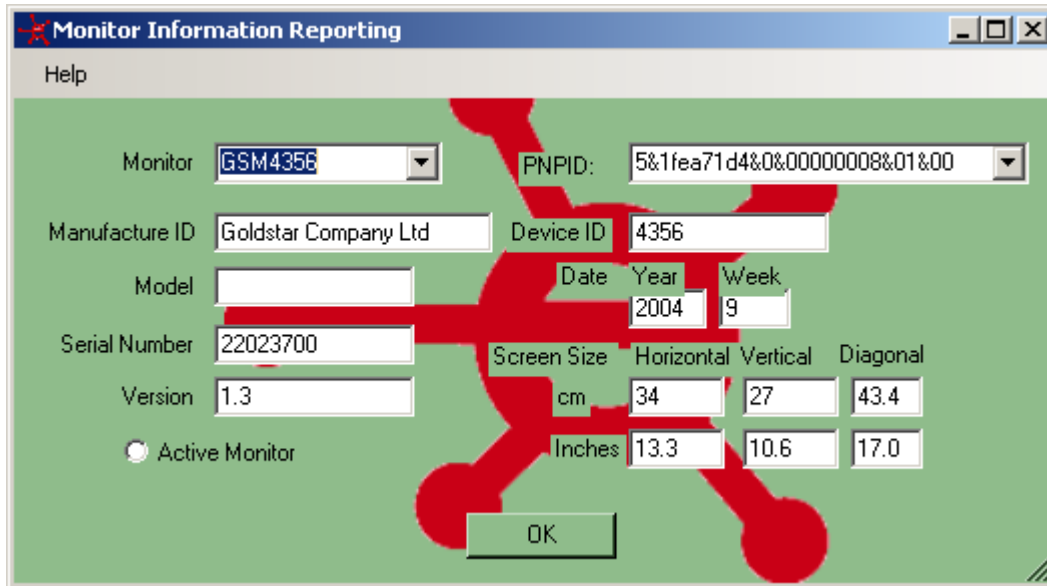
Client Reports

All client reports are found within the “Computer Details” listing.

List of Monitors by PC

This report provides information about each monitor attached to the PC: Monitor Name, Plug and Play ID, Manufacturer Name, Device ID, Model name, Serial Number¹, Year manufactured, Week manufactured², EDID version, Monitor dimensions and size.

Program Sample Output



The screenshot shows a window titled "Monitor Information Reporting" with a "Help" button. The form contains the following fields:

- Monitor: GSM4356
- PNPID: 5&1fea71d4&0&00000008&01&00
- Manufacture ID: Goldstar Company Ltd
- Device ID: 4356
- Model: (empty)
- Date: Year 2004, Week 9
- Serial Number: 22023700
- Version: 1.3
- Active Monitor:
- Screen Size: Horizontal 34 cm, Vertical 27 cm, Diagonal 43.4 cm (Inches: 13.3, 10.6, 17.0)
- OK button

Figure 1 Monitor Information Report Sample Output

Manual Install

sms_def.mof

In order to allow for Monitor Information Reporting to correctly function a simple modification to your sms_def.mof will need to be made on all ConfigMgr / SMS Primary site servers. **NOTE:** Clients will not report any data until this modification is done.

- 1) First locate your existing mof file usually located within <Install Location>\inboxes\clfiles.src\hin

¹ Not all manufacture included this information or they only included the last 13 characters of the serial number.

² Some manufacture does not follow the standard for this information and is sometimes set to Month manufactured and not week.

- 2) Backup the existing sms_def.mof within the directory.
- 3) Open sms_def.mof with notepad
- 4) Open MIR_edit.mof with notepad
- 5) Copy the contents of MIR_edit.mof to sms_def.mof and save the changes
- 6) Copy the updated sms_def.mof to all ConfigMgr/SMS primary site servers.

Package / Program

Create a package and distribute this package just as you would for any other program. Next create a program on the general tab. It is recommend that the /Auto command line switch be used in order for the program to run silently. Your general tab should look similar to this one. **NOTE:** By default MIR will run in interactive mode; to run MIR silently use the /Auto switch.

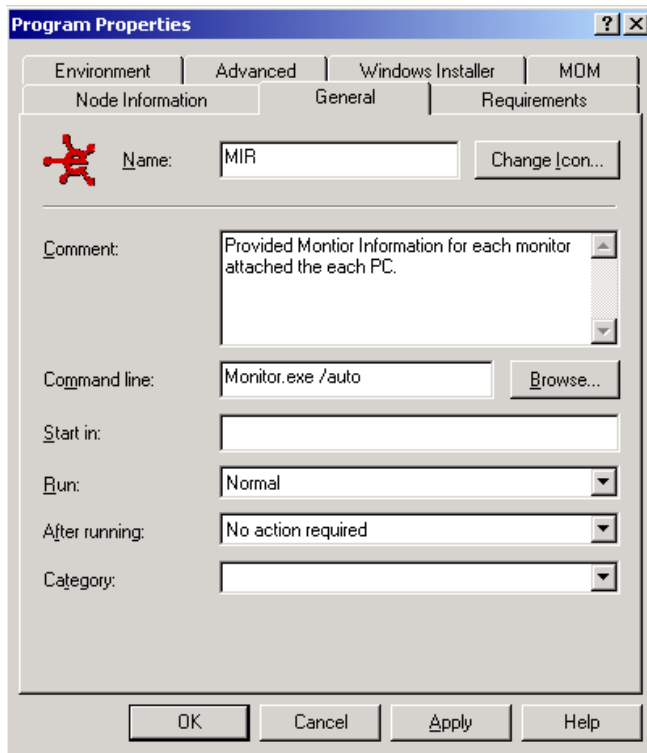


Figure 2 Program Properties General Tab

Change the “run mode” on the Environment tab to **Run with administrative rights** and enable the **All users to interact with this program**. Your environment tab should look similar to the one below.

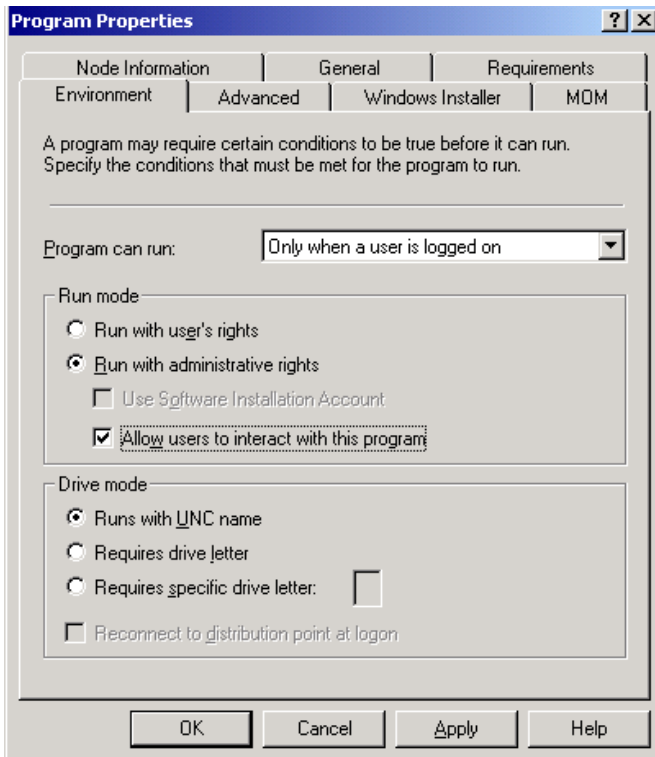


Figure 3 Program Properties Environment tab

Advertisement

Create an advertisement just as you would for any other program however we recommend that you set the “download program from distribution point” option within the Advanced Client tab.

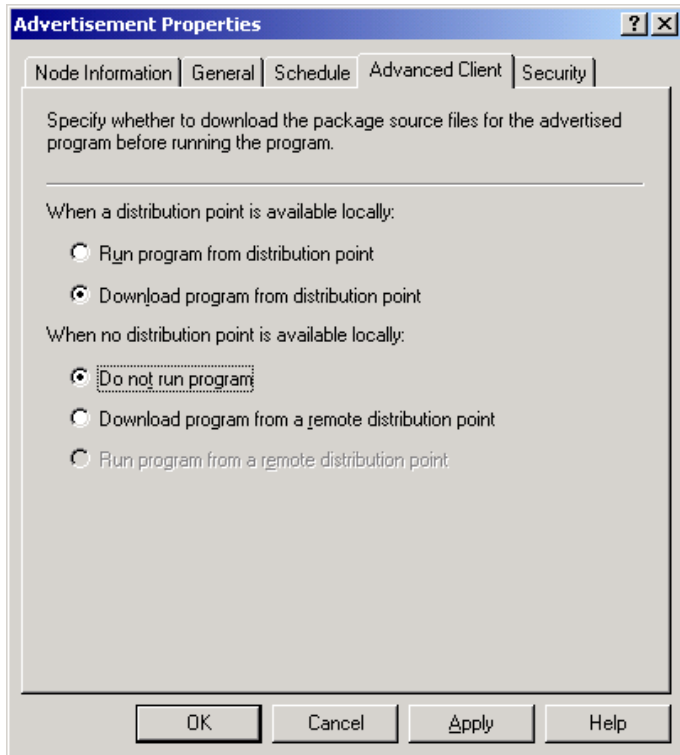


Figure 4 Advertisement Advanced Client setting

Collections

The following collection can be used to ensure that all PCs have Monitor data. This is Collection can be used to for re-occurring advertisements to capture new PCs as they connect to the network.

Missing Monitor Data Collection

This WMI query can be used to determine all PCs without monitor data.

```
select distinct
SMS_G_System_COMPUTER_SYSTEM.Name
from SMS_G_System_COMPUTER_SYSTEM
where SMS_G_System_COMPUTER_SYSTEM.ResourceID not in
(select distinct
SMS_G_System_ENHANSOFT_MONITOR_1_0.ResourceID from
SMS_G_System_ENHANSOFT_MONITOR_1_0)
```

Considerations

On-going rollout

We recommend that a daily reoccurring advertisement is created and advertized all PCs without MIR Data. This will allow for all new PCs as they are deployed within your environment to be inventoried, once the major rollout of MIR is completed.

Since the data is only updated when the MIR is executed on a workstation, it is recommend that on a regular bases (bi-weekly, monthly) that MIR is advertized to all clients to ensure that most up to date information is available. This can be setup as a re-occurring advertisement.

In most cases this is more than sufficient to ensure accurate data with a nominal error rate. To reduce this error rate schedule the advertisement to occur more frequently (daily or weekly).

Purchasing policy

In order to gain full benefit of Monitor Information Reporting, a PC purchasing policy should be created to at minimum ensure all clients only purchase monitors from your company's recommend list.

Table of Figures

Figure 1 Monitor Information Report Sample Output	5
Figure 2 Program Properties General Tab.....	6
Figure 3 Program Properties Environment tab.....	7
Figure 4 Advertisement Advanced Client setting	8